

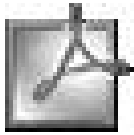
**>Before using this book, please note:**

*As new technologies are being developed everyday, programs are updated and new versions are frequently released.*

*Phoenix Color will be updating our settings in response to new software releases and upgrades when appropriate. Please refer to the Phoenix Color website: [www.phoenixcolor.com/tech\\_info/downloads.html](http://www.phoenixcolor.com/tech_info/downloads.html) for the latest updates.*

**Please note:**

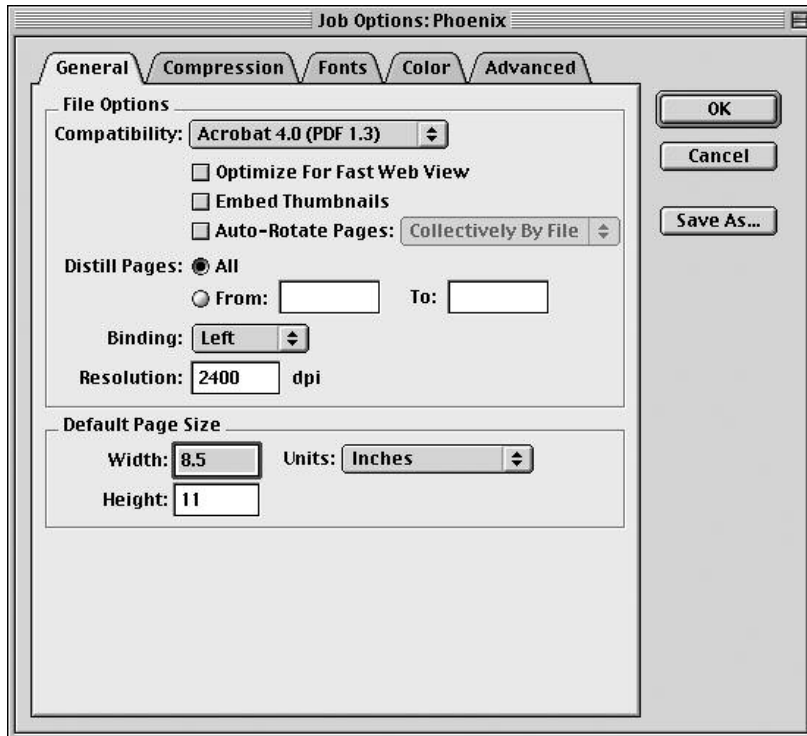
*Depending on the operating system you are using the windows in each of the programs may appear differently than in the screen shots provided. The actual window appearances may vary, content should be the same.*



## > **Creating PDF Files from Adobe® Acrobat® 5.0 Distiller**

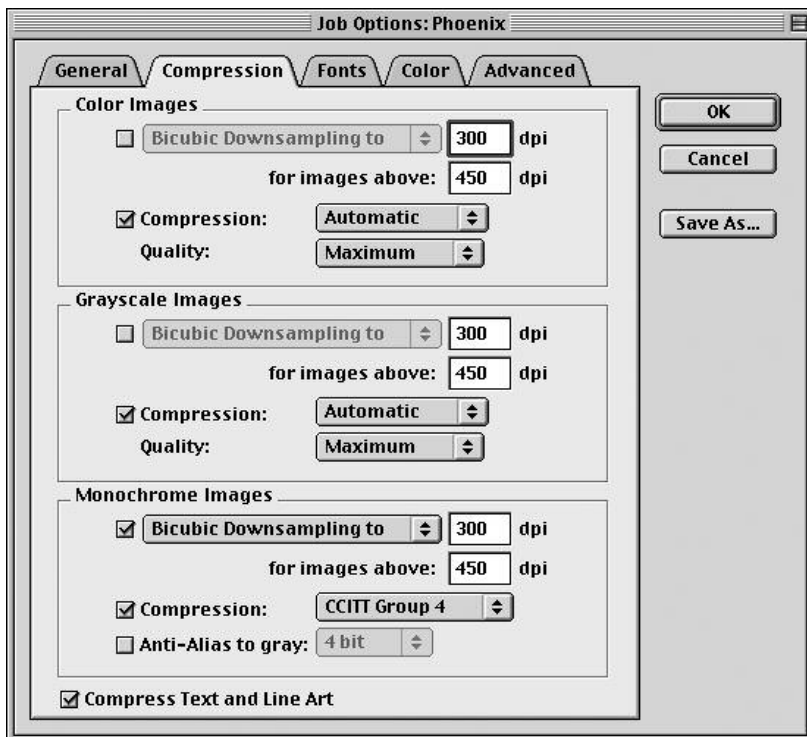
### Settings for **Rockaway/Phoenix Asia**

For standardizing the PostScripting procedure, please select the Adobe PS printer from the Chooser. The latest version can be downloaded from Adobe:  
<http://www.adobe.com/support/downloads/> under **Printer Drivers**.



### **Acrobat® Distiller® 5.0 job options for creating PDF Files**

- > From the **Settings** menu select **Job Options**.
- > Select the **General** tab.
- > Set **Compatibility**: to **Acrobat 4.0 (PDF 1.3)**.
- > Deselect **Optimize For Fast Web View**.
- > Deselect **Embed Thumbnails**.
- > Deselect **Auto-Rotate Pages**.
- > Set **Distill Pages**: to **All**.
- > Set **Binding**: to **Left**.
- > Set **Resolution**: to **2400 dpi**.
- > Set **Default Page Size** as required.
- > Set **Units**: to **Inches**.

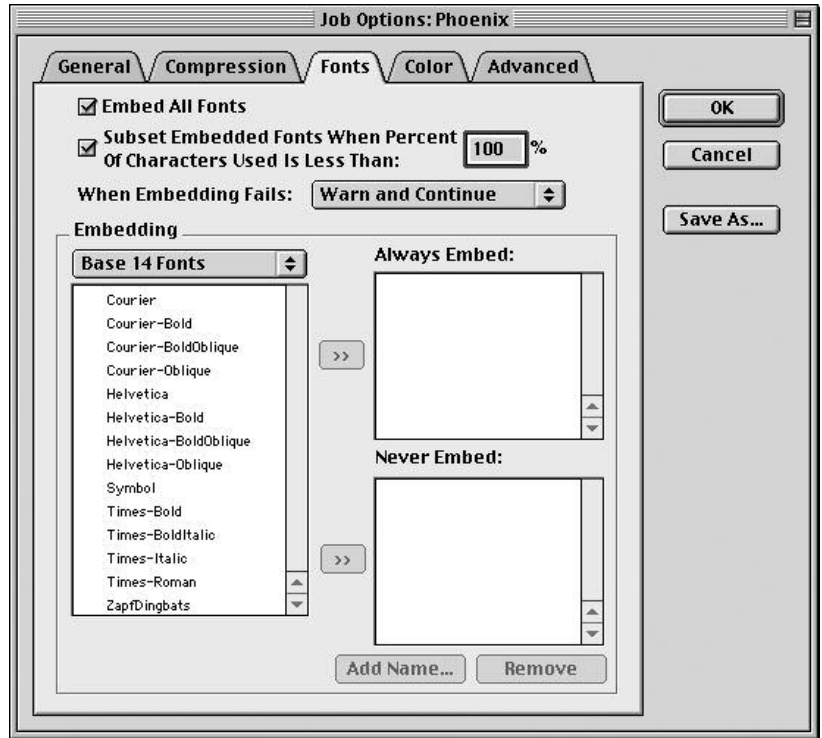


- > Select the **Compression** tab.
- Color Images:**
  - > Deselect **Bicubic Downsampling to**.
  - > Select **Compression**: set to **Automatic**.
  - > Set **Quality**: to **Maximum**.
- Grayscale Images:**
  - > Deselect **Bicubic Downsampling to**.
  - > Select **Compression**: set to **Automatic**.
  - > Set **Quality**: to **Maximum**.
- Monochrome Images:**
  - > Select **Bicubic Downsampling to** and set to: **300 dpi** and for images above **450 dpi**.
  - > Select **Compression**: set to **CCITT Group 4**.
  - > Deselect the **Anti-Alias**.
  - > Select **Compress Text and Line Art**.

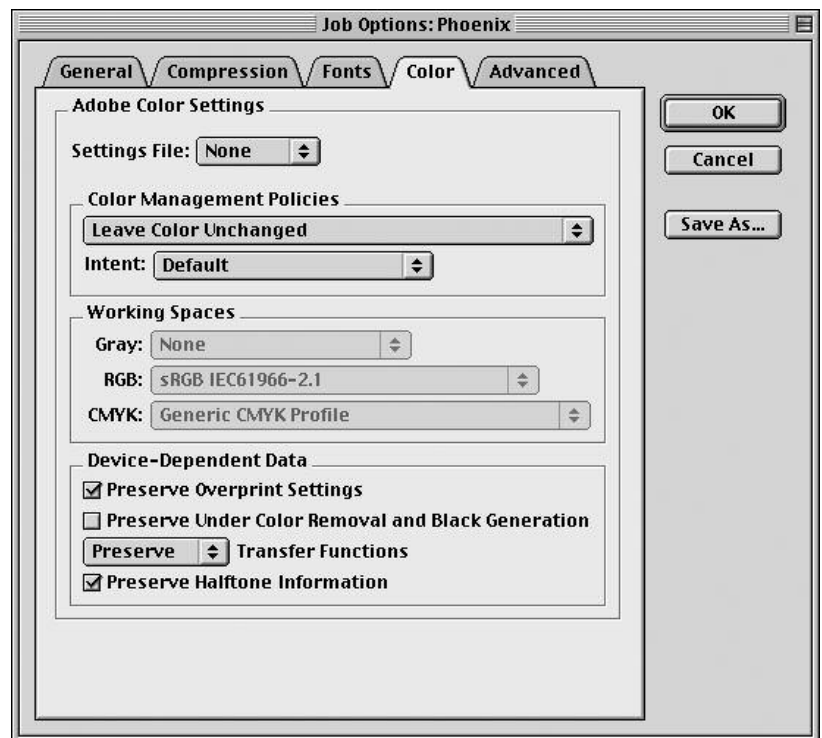
**NOTE:**

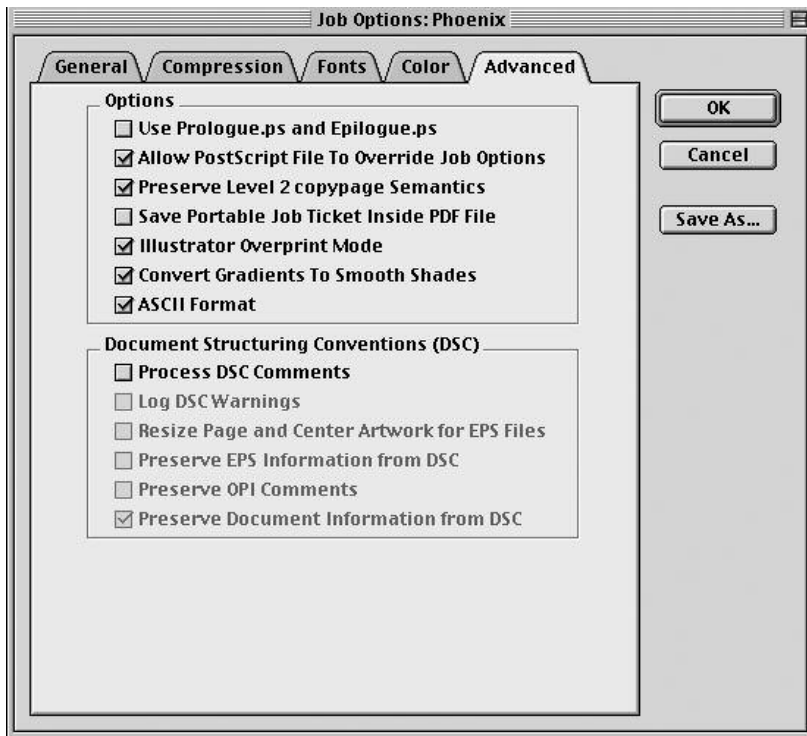
Fonts can be embedded in the PDF file. If they are not embedded in the PDF file, Adobe Acrobat may substitute Multiple Master fonts if the real outline font is not available.

- > Select the **Fonts** tab.
- > Select **Embed All Fonts**.
- > Select **Subset Embedded Fonts When Percent Of Characters Used Is Less Than** check box and fill in the % box with the amount needed. We recommend **100%** to include maximum font information.
- > Set **When Embedding Fails:** to **Warn and Continue**.
- > Add fonts to the **Always Embed List** and **Never Embed List** as needed.

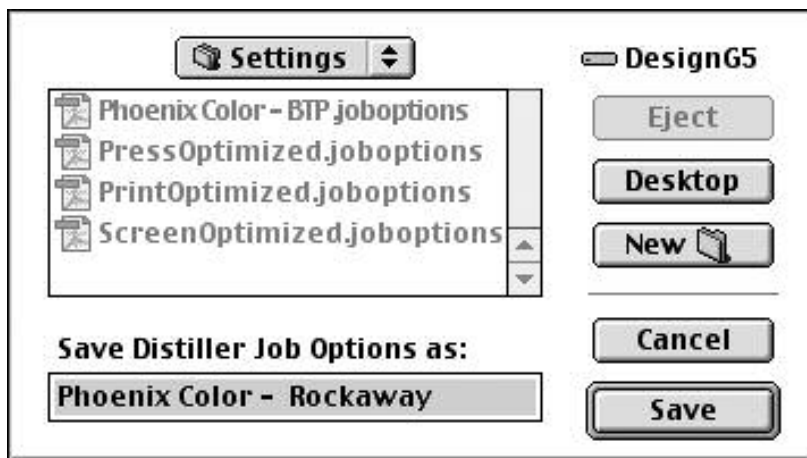


- > Select the **Color** tab.
- > Set **Settings File:** to **None**.
- > Set **Color Management Policies** to **Leave Color Unchanged**.
- > Set **Intent:** to **Default**.
- > Select **Preserve Overprint Settings**.
- > Deselect **Preserve Under Color Removal and Black Generation**.
- > Select **Preserve** for **Transfer Functions**.
- > Select **Preserve Halftone Information**.





- > Select the **Advanced** tab.
- > Deselect **Use prologue.ps and Epilogue.ps**.
- > Select **Allow PostScript File to Override Job Options**.
- > Select **Preserve Level 2 copypage Semantics**.
- > Deselect **Save Portable Job Ticket Inside PDF file**.
- > Select **Illustrator Overprint Mode**.
- > Select the **Convert Gradients To Smooth Shades**.
- > Select **ASCII Format**.
- > Deselect **Process DSC Comments**.
- > Click **Save As...**



- > Name the setting to be used in the future.
- > Select **Save**.

You can now create PDF files for Phoenix Color's Rockaway/Phoenix Asia division.