

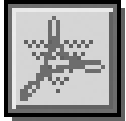
**>Before using this book, please note:**

*As new technologies are being developed everyday, programs are updated and new versions are frequently released.*

*Phoenix Color will be updating our settings in response to new software releases and upgrades when appropriate. Please refer to the Phoenix Color website: [www.phoenixcolor.com/tech\\_info/downloads.html](http://www.phoenixcolor.com/tech_info/downloads.html) for the latest updates.*

**Please note:**

*Depending on the operating system you are using the windows in each of the programs may appear differently than in the screen shots provided. The actual window appearances may vary, content should be the same.*



## > **Creating PDF Files from Adobe® Acrobat® 4.0 Distiller**

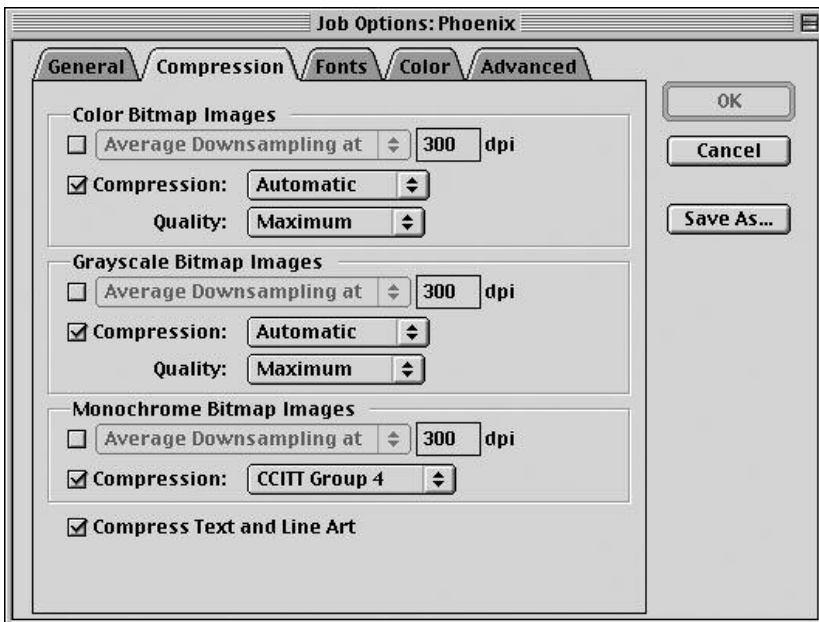
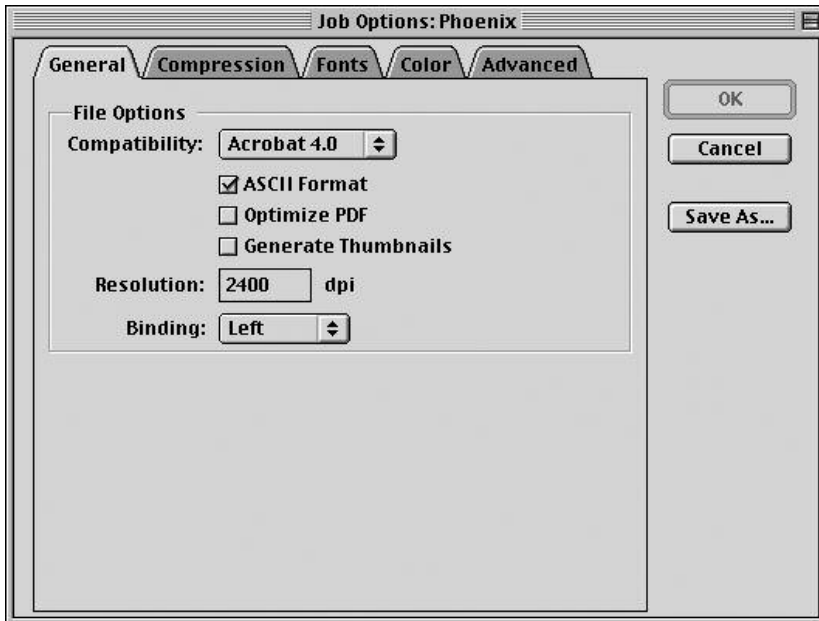
### Settings for **Rockaway/Phoenix Asia**

For standardizing the PostScripting procedure, please select the Adobe PS printer from the Chooser. The latest version can be downloaded from Adobe:  
<http://www.adobe.com/support/downloads/> under **Printer Drivers**.

#### **Acrobat® Distiller® 4.0 job options for creating PDF Files**

- > From the **Settings** menu select **Job Options**.
- > Select the **General** tab.
- > Set **Compatibility:** to **Acrobat 4.0**.
- > Select **ASCII Format**.
- > Deselect **Optimize PDF**.
- > Deselect **Generate Thumbnails**.
- > Set **Resolution:** to **2400 dpi**.
- > Set **Binding:** to **Left**.

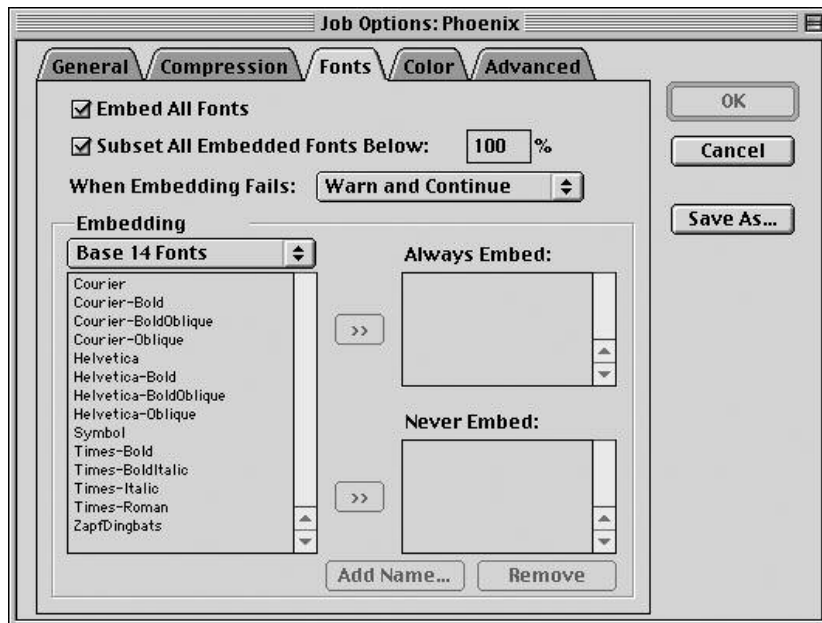
- > Select the **Compression** tab.
- Color Bitmap Images:**
  - > Deselect **Average Downsampling at**.
  - > Select **Compression:** set to **Automatic**.
  - > Set **Quality:** to **Maximum**.
- Grayscale Bitmap Images:**
  - > Deselect **Average Downsampling at**.
  - > Select **Compression:** set to **Automatic**.
  - > Set **Quality:** to **Maximum**.
- Monochrome Bitmap Images:**
  - > Deselect **Average Downsampling at**.
  - > Select **Compression:** set to **CCITT Group 4**.
  - > Select **Compress Text and Line Art**.



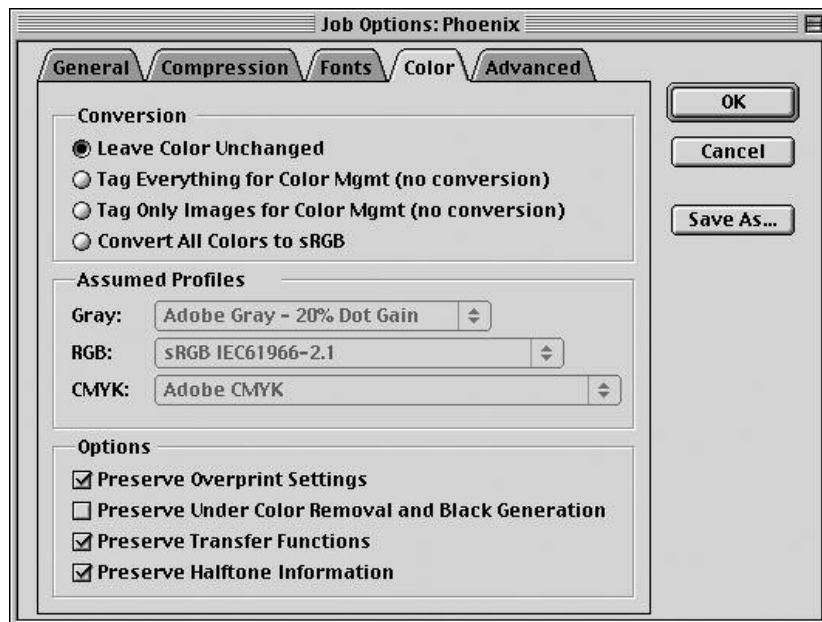
**NOTE:**

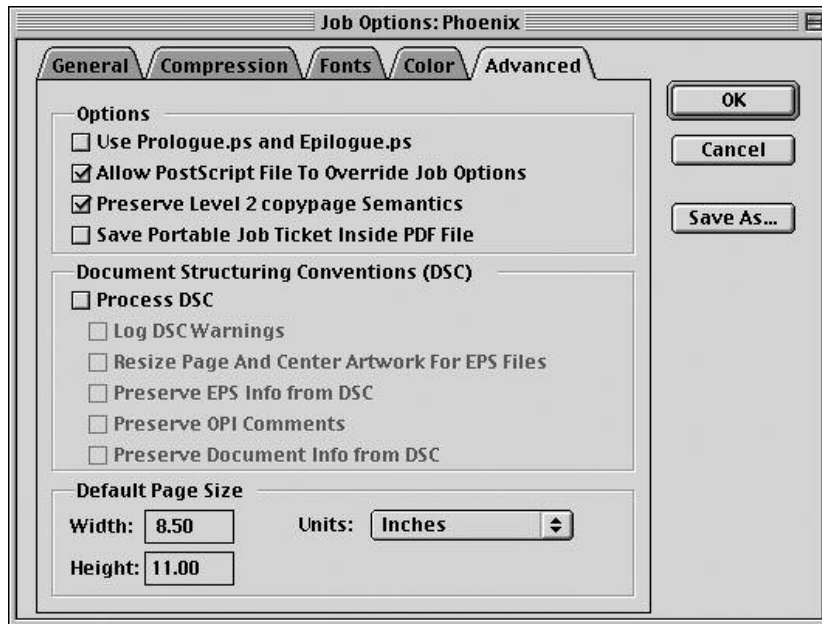
Fonts can be embedded in the PDF file. If they are not embedded in the PDF file, Adobe® Acrobat® may substitute Multiple Master fonts if the real outline font is not available.

- > Select the **Fonts** tab.
- > Select **Embed All Fonts**.
- > Select **Subset All Embedded Fonts Below** check box and fill in the % box with the amount needed. We recommend **100%** to include maximum font information.
- > Select **When Embedding Fails:** and set to **Warn and Continue**.
- > Add fonts to the **Always Embed List** and **Never Embed List** as needed.

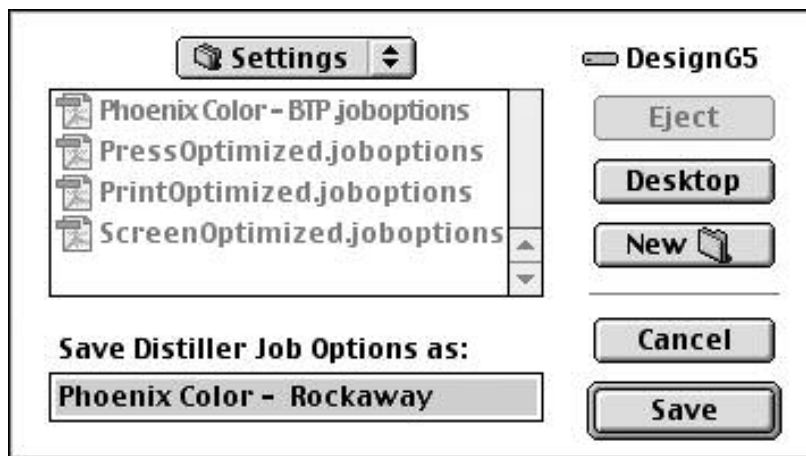


- > Select the **Color** tab.
- > Select **Leave Color Unchanged**.
- > Select **Preserve Overprint Settings**.
- > Deselect **Preserve Under Color Removal and Black Generation**.
- > Select **Preserve Transfer Functions**.
- > Select **Preserve Halftone Information**.





- > Select the **Advanced** tab.
- > Deselect **Use Prologue.ps and Epilogue.ps**.
- > Select **Allow PostScript File to Override Job Options**.
- > Select **Preserve Level 2 copypage Semantics**.
- > Deselect the **Save Portable Job Ticket Inside PDF**.
- > Deselect **Process DSC**.
- > Set **Default Page Size** as required.
- > Click **Save As**.



- > Name the setting to be used in the future.
- > Select **Save**.

You can now create PDF files for Phoenix Color's Rockaway/Phoenix Asia division.